

UI Bulletin #115d

Subject: Upfitter Circuit Provisions

Models Affected: Chevrolet Silverado
GMC Sierra

Model Years: 2014 and Beyond

Date: March 20, 2014

Revision Date: February 17, 2016

ADVISORY:

Condition/Concern:

Upfitters may inquire on the new 2014-2015 LD Full-size trucks and for the 2015 HD series as to where to access commonly used circuit for adding aftermarket equipment.

Recommendation:

Commonly utilized circuits are available for use in the ICEM (formally referred to as the Mid-BEC or MBEC) which is located in the LH foot well, near or below the parking brake mechanism (see figure 1)

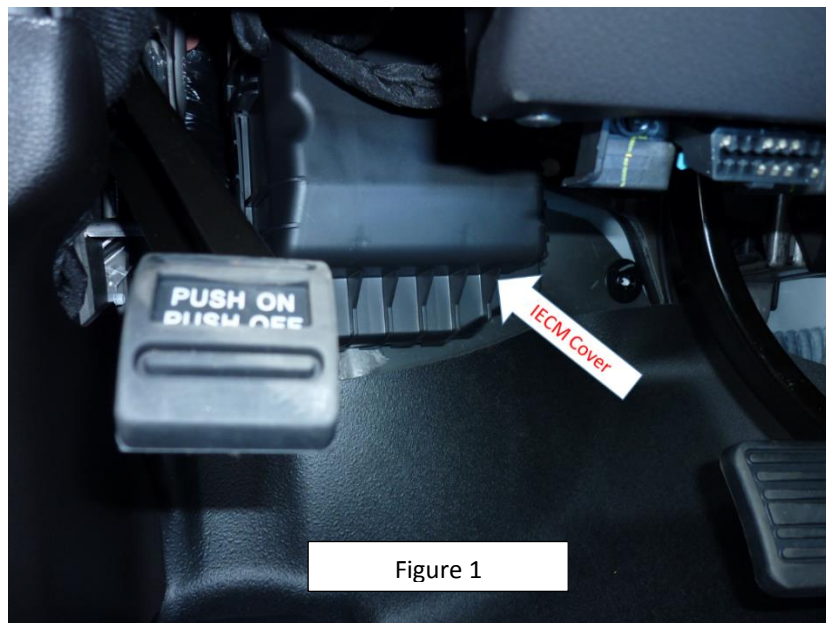
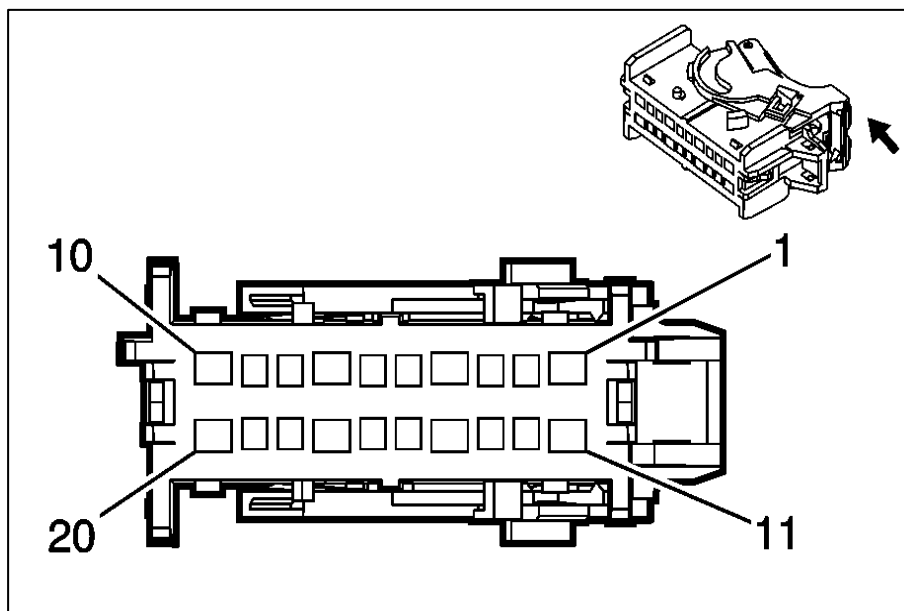
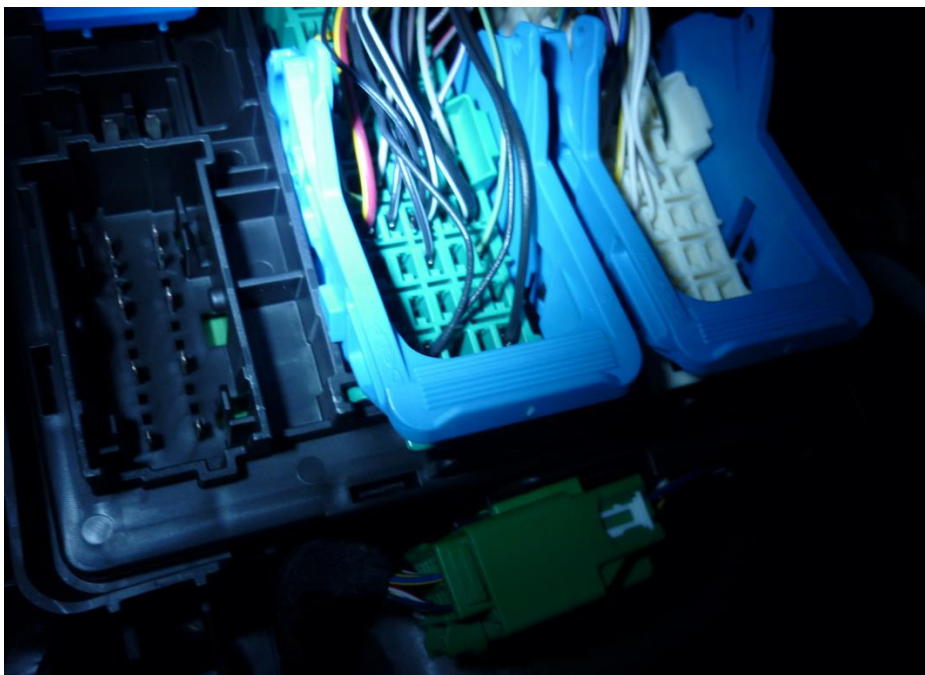


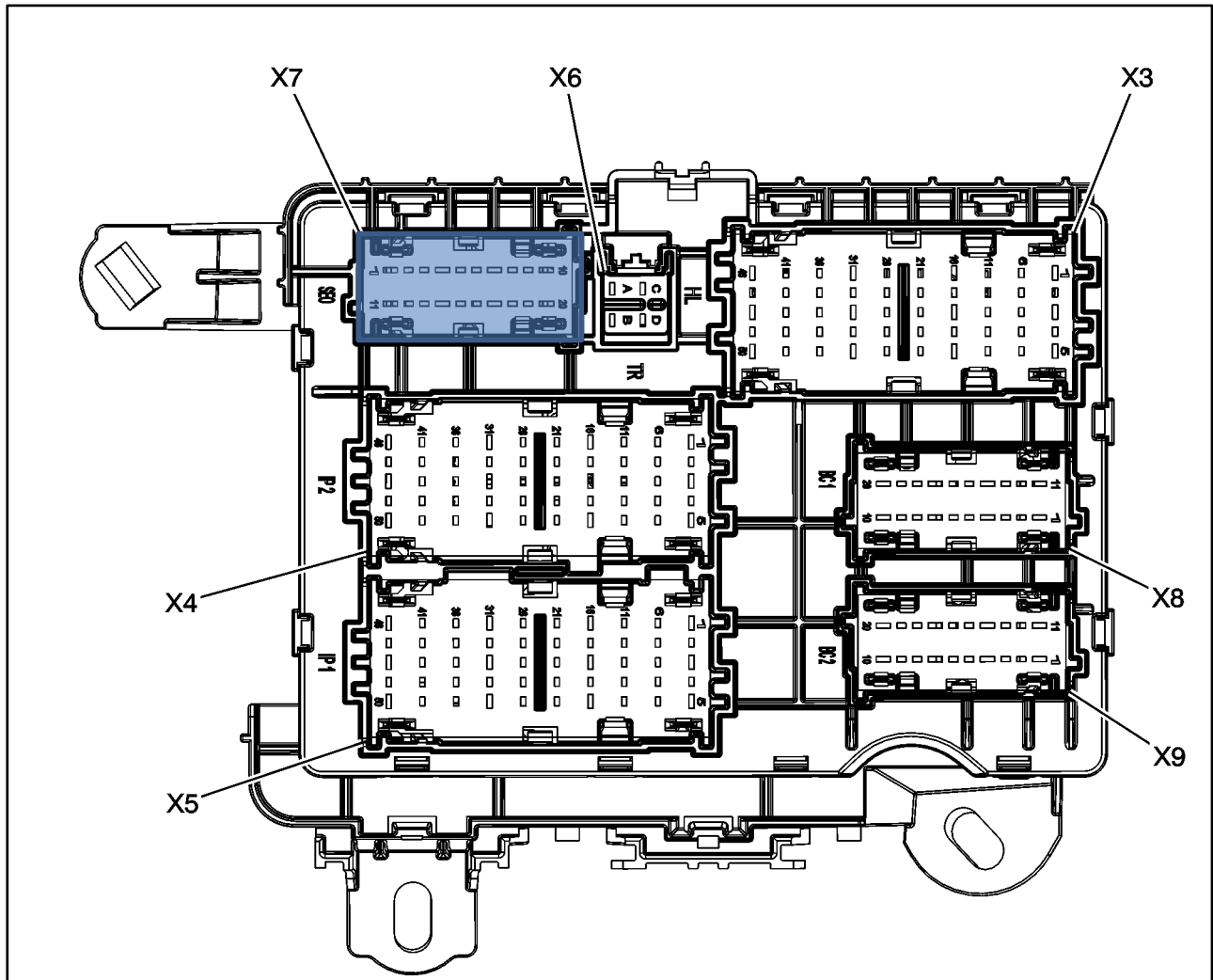
Figure 1

General Motors Upfitter Integration
www.gmupfitter.com



Refer to connector pin-out table for connector and terminal part number information (next page).

X61A Junction Block Top View



General Motors Upfitter Integration
www.gmupfitter.com

Connector Part Information

- Harness Type: Upfitter
- OEM Connector: 13924036
- Service Connector: Kit P/N 19328970 Includes Connector body and Lock Lever
- Description: 20-Way F 1.5, 2.8 Series (BK)

Also now available for order at GM dealers

Terminal Part Information

Terminal Type ID	Terminated Lead	Diagnostic Test Probe	Terminal Removal Tool	Service Terminal	Tray	Core Crimp	Insulation Crimp
I	13575832	J-35616-35 (VT)	J-38125-11A	7116-4112-02	9	C	D
II	13578892	J-35616-2A (GY)	J-38125-11A	7116-4101-08	9	E	A

X61A Junction Block - Instrument Panel X7

Pin	Size	Color	Circuit	Function/Fuse Rating	Terminal Type ID	Option
1	0		968	Upfitter Provision (30amp)(Aux. SW 4 output)	I	9L7
2-3	-	-	-	Not Occupied	-	-
4	0		967	Upfitter Provision (30amp)(Aux. SW 3 output)	I	9L7
5-6	-	-	-	Not Occupied	-	-
7	0	RD/YE	2340	Battery Positive Voltage (15 amp)	I	-
8	0	VT/YE	43	Accessory Voltage (10 amp)	II	-
9	0	GN	5060	Low Speed GMLAN Serial Data	II	-
10	0	BK	1050	Ground	I	-
11	0	VT/WH	1939	Run/Crank Ignition 1 Voltage (15 amp)	I	-
12-13	-	-	-	Not Occupied	-	-
14	0		966	Upfitter Provision (30amp)(Aux. SW 2 output)	I	9L7
15-16	-	-	-	Not Occupied	-	-
17	0	RD/YE	2340	Battery Positive Voltage (15 amp)	I	-
18	-	-	-	Not Occupied	-	-
19	0	GN/GY	817	Vehicle Speed Signal (4k PPM)	II	-
20	0		965	Upfitter Provision (30amp)(Aux. SW 1 output)	I	9L7

Note: The yellow shaded terminals are available signals for Upfitter usage.

General Motors Upfitter Integration

www.gmupfitter.com

Wire Harness Pass-thru location



General Motors Upfitter Integration
www.gmupfitter.com